
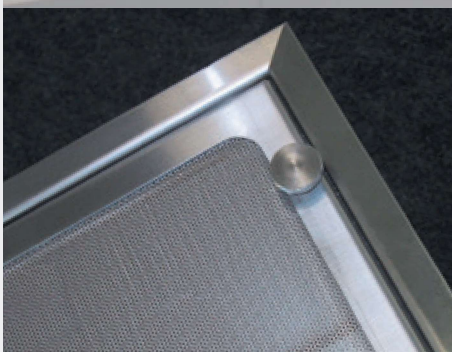
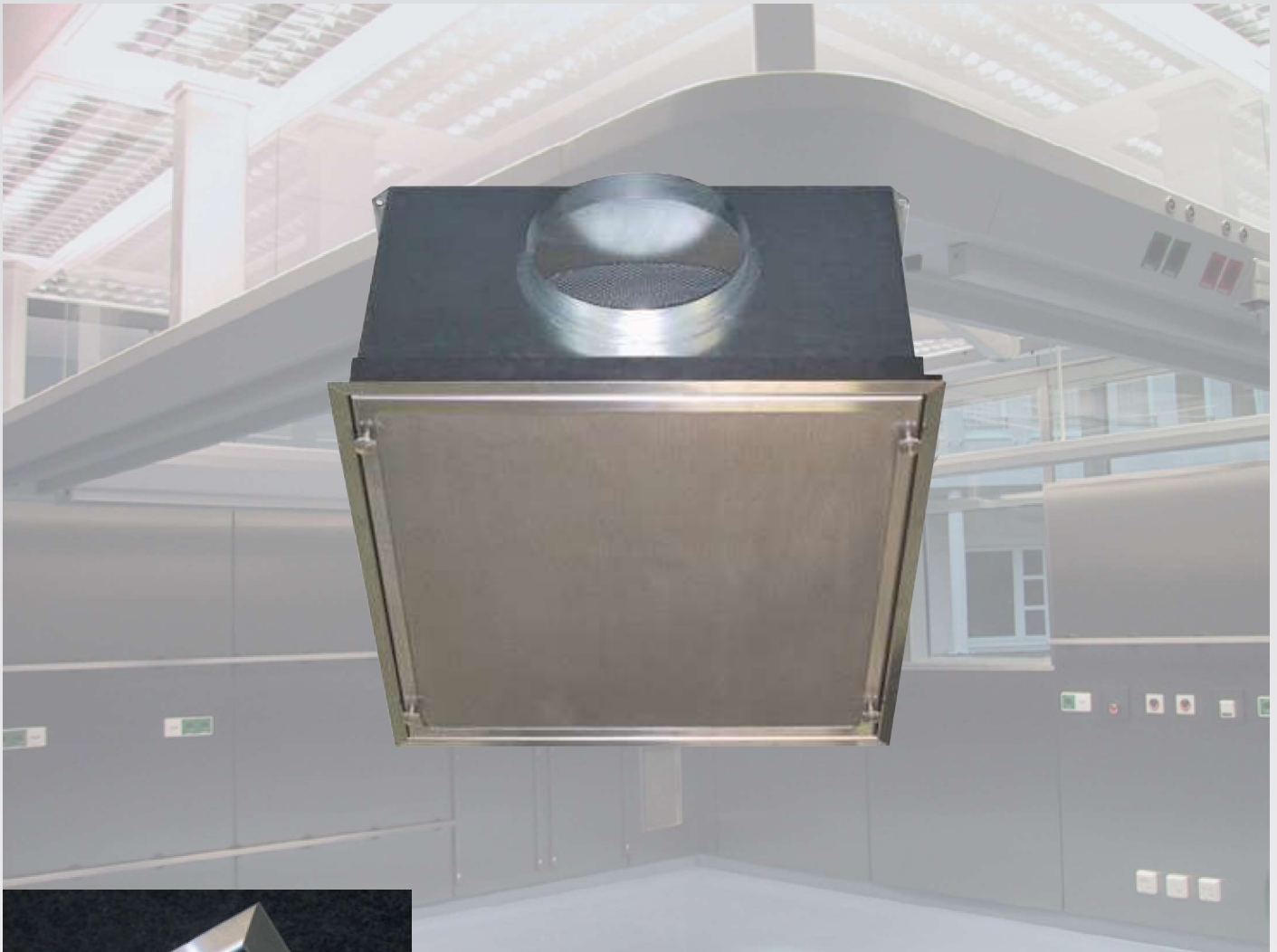


ROX ceiling mounted air intake

ROX ceiling mounted air intake, type RAC-D with fluff separator



More info at:
www.rox-online.de
Take a look!

Description

The ceiling mounted air intake with fluff separator, type RAC-D, was specifically designed for use in hospitals demanding the highest hygiene standards. It meets the requirements of DIN 1946-4 and VDI 6022. Fluff separators are designed to remove air contamination caused by abrasion of OR textiles. These are used both in extract air and overflow air vents. They protect air ducts and system components and enable the economical and trouble-free operation of air handling units.

Version

The insert in the fluff separator comprises a mechanically robust, perforated stainless steel panel, a mounting frame and a ceiling support bracket made from polished stainless steel (grade 180). The casing is made from galvanised sheet steel, and as an option is presented with a two-coat internal paint finish which is resistant to disinfectants. The air connection can be equipped with internal control dampers or airtight shut-off dampers. A uniform appearance in the wall and ceiling area can be achieved by combining the ROX ceiling mounted air intake, type RAC-D, with the ROX fluff separator, type RAC, for wall integration.

Tender documentation

Ceiling mounted air intake for extract air from OR sections with integral fluff separator, comprising the following:

- mounting casing with round connector made from galvanised sheet steel,
- fluff separator insert as a perforated stainless steel panel (perforations 1.0 mm diameter), with mounting frame made from polished stainless sheet steel, grade 180, and
- ceiling support bracket made from polished stainless sheet steel, grade 180.

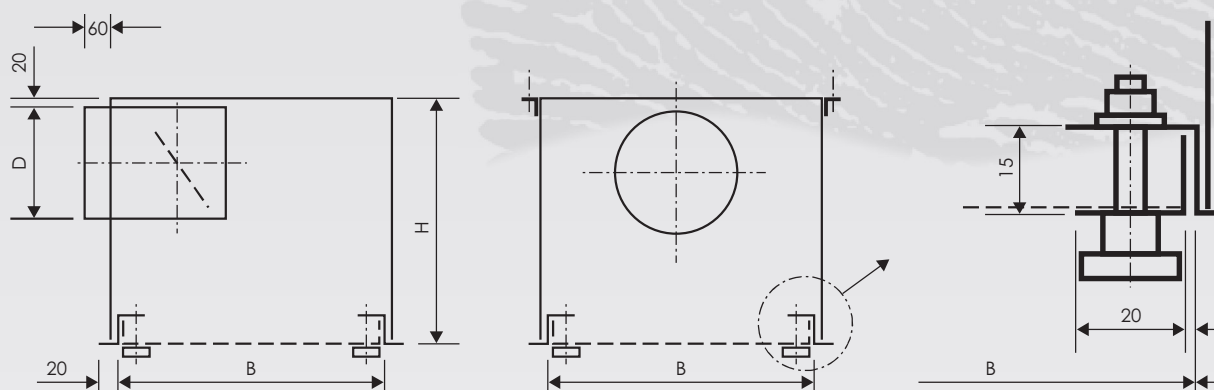
Accessories/special versions (options)

- Two-coat internal paint finish, resistant to disinfectants.
- Stainless steel mounting casing.
- Internal regulating damper with notched adjuster.
- Internal airtight shut-off damper with electric actuator.
- Internal airtight shut-off damper with manual actuation.

Airflow rate: _____ m³/h
 Pressure drop: _____ Pa
 Width/depth/height: _____ mm
 Connection diameter: _____ mm

Make: ROX
 Type: RAC-D

Dimensioned drawing



Specification

Size	Dimensions			Nominal airflow rate \dot{V} in m ³ /h/sound power level L_{WA} in dB(A) at					
	B in mm	H in mm	D in mm	$\Delta p = 19$ Pa $w = 1.0$ m/s	$\Delta p = 29$ Pa $w = 1.3$ m/s	$\Delta p = 42$ Pa $w = 1.6$ m/s	$\Delta p = 58$ Pa $w = 1.9$ m/s	$\Delta p = 77$ Pa $w = 2.2$ m/s	$\Delta p = 99$ Pa $w = 2.5$ m/s
1	350	300	180	324 on request	421 on request	518 on request	616 on request	713 on request	810 on request
2	400	300	180	441 on request	573 on request	706 on request	838 on request	970 on request	1103 on request
3	450	300	200	576 on request	749 on request	922 on request	1094 on request	1267 on request	1440 on request
4	500	350	200	729 on request	948 on request	1166 on request	1385 on request	1604 on request	1823 on request
5	550	350	224	900 on request	1170 on request	1440 on request	1710 on request	1980 on request	2250 on request
6	600	400	224	1089 on request	1416 on request	1742 on request	2069 on request	2396 on request	2723 on request
7	650	400	250	1096 on request	1685 on request	2074 on request	2462 on request	2851 on request	3240 on request

\dot{V} = nominal airflow rate in m³/h

L_{WA} = sound power level in dB(A) on request

Δp = pressure drop in Pa

w = throughput velocity in m/s

Sound power level details and pressure drop exclude butterfly valves and shut-off equipment



Alternative dimensions on request

This specification is provided as an example only. Please check with us for your individual case.

Subject to technical modifications.